

THE BENEFICE OF WALTON & TRIMLEY

Benefice Profile 2023



Our Mission Statement agreed by the churches in 2020 is
“to grow in faith together through the love of God,
be empowered to make Jesus known and inspired by
the Holy Spirit to be His light in our communities”
and this underpins all our activities within our benefice.

To Grow in Faith

To Make Jesus Known

To Be His Light

Contents

Welcome and Introduction	3
We can offer	5
We are praying that our new rector will	6
Worship in the benefice	8
Growing in God in the benefice	9
Our mission partners in the community	10
St. Mary's Walton	11
<i>Church Hall</i>	12
<i>Victoria Cottage</i>	12
St. Philips community hub	13
<i>St. Philips Church Hall</i>	13
St. Martin's and St. Mary's Trimley	14
<i>About our churches</i>	15
<i>Community life in the Trimley villages</i>	17
Our Town	18
Colneys Deanery	20
The Diocese of St Edmundsbury and Ipswich	21
<i>Growing In God</i>	23
<i>Lightwave</i>	25
<i>Loverural</i>	26

Welcome and Introduction

As you begin to read through our Benefice profile, we would like to welcome you and thank you for taking the time to read and pray through what we have prepared. For our part we have been and will continue to pray for all those who read and consider this opportunity to serve the Churches in this Benefice and to join us in God's mission to our locality.

We are situated near the end of a peninsula bordered by the River Deben to the north, the River Orwell to the south and the North Sea to the east. Walton originally spanned a large area adjacent to a small fishing hamlet known as Felixstowe, with the Trimleys being slightly further inland.

Today Walton and Trimley are rapidly growing villages with a number of new and 'under construction' housing developments. They are considered to be on the outskirts of Felixstowe, now the UK's busiest port. The Benefice was formed in 2014 from the parishes of St Mary's Walton and St Martin's and St Mary's Trimley.

As an expression of the churches mission a Pop-up Shop was started at St. Philip's church hall in an area of economic deprivation. This led to the development of a Community Hub and then a regular Café Style worship service on a Sunday morning.



The congregations are happy and active but with their own identities. They remain a central part of their communities with each church family eager to share the good news of Jesus with their neighbours. Each worshipping community has unique attributes and challenges as they serve very different contexts. However, there is a desire to work together and build on the relationships that were strengthened during the pandemic.

The parishes work closely together and join for a Benefice service 4 times a year. There are two PCCs, one representing St. Mary's and St. Philip's and the other St. Martin's. Each PCC contributes towards the Parish Share so that as a Benefice this is paid in full.

The Benefice churches belong to and support Churches Together in Felixstowe which links the Christian witness in the town and provides joint ventures in which many members of the church families participate. These include events during Unity Week, a procession of witness from St Mary's Church to the town centre on Good Friday where a united service is held, and a 'Son Rise' service on Easter Sunday morning on the beach.

Hyperlinks to:-

St Mary Walton [Website](#) • St Martins Trimley [Website](#)

We can offer...

- A strong, welcoming, praying, caring, loving community who will support their rector in ministry and life.
- A passionate group of ministerial colleagues who will work alongside the new incumbent.
These include two retired clergy, an Associate Priest, a Curate, one Ordinand all of whom are part time and non stipendiary, four Readers, seven Lay Elders, music coordinators and many others in the fellowships who read lessons, lead intercessions and visit the sick and housebound. (The diocese defines the role of Elder as: men and women chosen by the local Church and authorised by the Diocesan Bishop for ministry in the local Church and community. They work mainly in the area of pastoral care and /or leading worship.)
- Active Churches with energy, enthusiasm and a range of skills that support the mission and ministry of the Churches and will seek to embrace the challenges of growth.
- Administrative support from a salaried Benefice Coordinator (25 hours per week).
- An attractive area in which to live and work, with the Sea, two Rivers and beautiful open countryside on your doorstep.
- A Benefice rectory situated at the edge of Walton. This is a modern 4 bedroom property. The Diocesan Property team are actively seeking an alternative property.



We are praying that our new rector will...

- Have a vibrant, prayerful, living faith that fuels a deep love for the people of the Benefice.
- Be able to teach from God's word in an engaging and relevant way.
- Be a leader who will seek God's vision with the Church and use the gifts and passions within the Benefice to work towards it.
- Be a team worker, able to lead and enable the pastoral teams that are involved in the mission and ministry of the Benefice.
- Ensure the pastoral care of all those involved in any ministry within the church.
- Be able to develop approaches to reaching the diverse range of people who make up the Benefice with the good news of Jesus. This includes a particular focus on families (Growing Younger) and on people from economically disadvantaged contexts.
- Be able to relate to people of differing ethnicity, sexuality and ability.



- Be committed to understanding and utilising IT and social media as an integral part of the mission of the church. Both Churches have the capacity to live stream services although only St. Mary's is currently doing so.
- Have responsibility for overseeing the Benefice Coordinator.
- Continue to welcome all those who wish to explore marriage or baptism in the Benefice Churches including the marriage of divorcees.
- Help us continue growing our Churches for the future, especially by engaging and attracting young families.
- Support us in building stronger links between our Churches and the schools within our Benefice.
- Equip and support us as together we expand our outreach in both Walton and Trimley which are experiencing significant rapid growth with extensive new housing developments.
- Recognize the importance of music in worship.
- Work with us to play our part in meeting the social and spiritual needs of those experiencing social deprivation across the benefice.



Worship in the Benefice

Our worship is central to the life of the Churches across the Benefice. We are open to change and eager to develop and innovate in our worship together in support of our missional calling.

Sunday

Sunday is when each Church comes together as a family, to meet with God and each other. These services encompass a wide range of worship styles and we seek to make them the very best that we can offer.

10:00 a.m. at both St Mary's and St Martin's.

Morning Worship services which offer opportunities for creative worship including Holy Communion and All Age Worship services. All services are followed by coffee and fellowship.

11:00 a.m. Café Style worship service at St Philip's

6:30 p.m. at St Mary's

This is a monthly service which is quieter and more reflective and usually includes Holy Communion and an occasional Taizé service.

Messy Church

Messy Church services, designed to attract families with young children are held monthly at St Martin's.

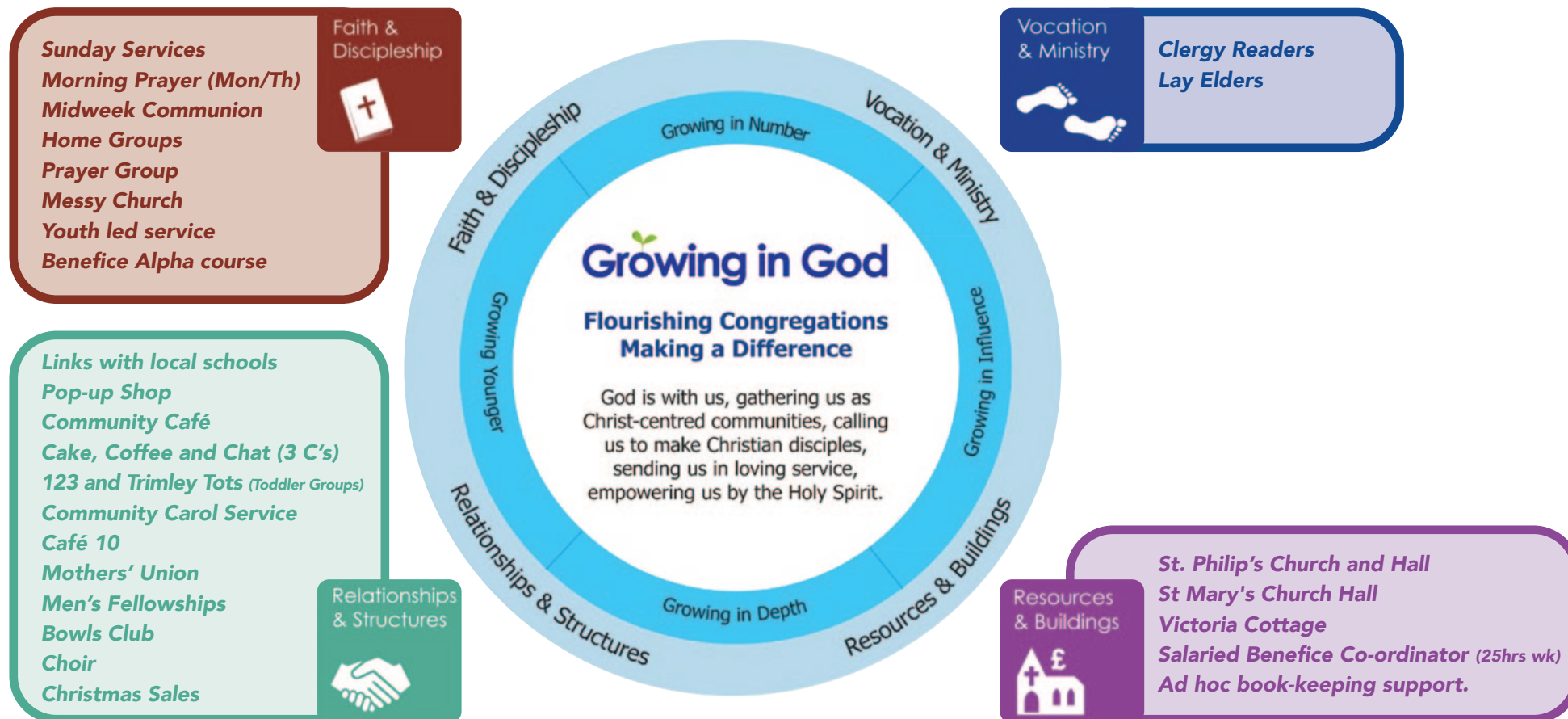
Midweek Worship

Morning prayer is held every Monday at St Mary's. Holy Communion is held every Wednesday morning at St Martin's. Morning prayer is held every Thursday at St Philip's.



Growing In God in the Benefice

Within the Diocese every Benefice and Parish is encouraged to use a Mission Action Planning tool to help focus on missional priorities. The graphic below illustrates what is currently happening in the Benefice to address these priorities



Our Mission Partners in the Community

There are several local mission initiatives that we support in a variety of ways in partnership with other churches and which we hope the incumbent will be supportive of.



BOOST

Providing a dynamic Christian presence through Chaplaincy to both pupils and staff in Felixstowe School



FELIXSTOWE TOWN PASTORS

A supportive Christian presence on a Saturday night on the streets of Felixstowe



WALTON PARISH NURSING

Whole person healthcare provided through local church partnership. The incumbent is a trustee of this fantastic work.



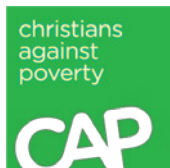
HOPE TRUST

Offering Support and community for Older People



FARE SHARE

Fighting hunger within our communities by ensuring food is not wasted but distributed to those in need.



CAP

Christian Debt Counselling and support



CHURCHES TOGETHER IN FELIXSTOWE

Working together as Churches across the town to bring glory to Jesus.

St Mary's, Walton

We are a loving and Open Evangelical Church that welcomes everyone and has a passion for bringing Jesus to our local community. We love to worship, proclaim the Gospel and praise God together. We are an active Church and there are numerous activities throughout the week which help us 'grow in God'.

We have links with the two schools in our parish. One primary school (SET Primary), and the towns secondary school Felixstowe School. This school is sympathetic to working with local churches and has its own Chaplain, Josh Hunt working for Boost a Charity funded by local Churches. Assemblies are taken at the primary school on a regular basis and our incumbent has previously been a governor of this school. As part of our growing relationship, we welcome the children of the primary schools into Church for occasional visits.

We work closely with the Methodist and Baptist Churches in Walton and join with them for Advent and Lent courses. All three Churches support Walton Parish Nursing (WPN), a pioneering service which is much valued in the parish. The Benefice incumbent is one of the trustees of Walton Parish Nursing.

Each year we commit to give 5% of our Church giving income to chosen charities, including Walton Parish Nursing, Boost and CPAS.



The church is an interesting medieval building dating back to the mid-1300s. A new tower was added in 1899 after the old tower was struck by lightning. The building has been loved and cared for and is in good order.

Within our Church building we have a flexible worship space with moveable chairs for 180. We have improved access to the Church by levelling the floor throughout the building and upgraded our facilities. The surrounding churchyard is closed and managed by East Suffolk Council. We have been awarded the eco-Church bronze award which requires that we manage the churchyard in a particular way. There is a car park at the rear of the church.

The parish population is approximately 6,000 but the new housing development at Walton Gate will increase this to nearer 7,000.

The Church Hall

The hall, situated directly opposite the church, was built in the early 20th century. It is well maintained and consists of a main hall with a stage, a committee room and a kitchen. It is well used by the church and other local organisations. Our 123-toddler group meets here every Wednesday.

Victoria Cottage

Adjacent to the Hall, this cottage was originally built for the Hall caretaker. It is currently rented out to a couple who are actively involved in church life.



St. Philip's Community Hub

The building was erected and extended in the 1950's and is U-shaped with an inner outdoor area. Little Hoppers Pre-School occupies one half of the building and the above outdoor area. This generates income. The other half is used for church activities described below.

Recent Developments: The area was identified as far back as 2012/13 as an area of both social need and where St Mary's had virtually no presence. In 2016 there was a desire to address some of the needs of people living in the area and to share the good news of Jesus with them. A Pop-up Shop (Food Bank) was launched on Tuesdays. Now both volunteers and attendees meet for a brief time of prayer before the shop opens. Average attendance is 40 people collecting on behalf of over 100.

In 2021 (post pandemic) The Hub (a Community Café) was started on Thursdays. This quickly became very popular serving on average 50-60 people and met specific social needs, made possible, with the support of various grants. It involves a weekly morning prayer open to all followed by free refreshments and a light lunch. During school summer holidays The Hub supplies packed lunches on a Thursday for local school children. Other venues provide lunches on other days.

Church: In October 21 (post pandemic) a monthly Sunday afternoon café church was launched. Then from September 2022, with the support of several 'pioneers' from the Benefice this developed into an informal café style worship service which meets every Sunday at 11am following refreshments. There is a growing congregation from the community and they recently celebrated their first adult baptism.

St Philip's Church Hall

The activities described above take place in St Philip's Church Hall. The Church is currently rented out by Little Hoppers preschool.



St Martin's and St Mary's Trimley Worship and parish life

Situated at the heart of the growing village the Church's worship style is characterised as Open Evangelical. The congregation offers a warm welcome to all who attend and is committed to enabling as many people as possible to join in regular worship with the Church family and become active participants in all that the Church is doing in the community. Our worship together focuses on prayer, scripture, music and the sacraments, and enables and empowers us to put our faith into practice. A fundamental expression of this is our outreach into the community which takes many forms: some purely social, others with a clearer spiritual focus. Our Social & Fundraising committee run several well attended events throughout the year and are always looking to expand their portfolio, thereby widening our outreach into the community.



We have a number of active families in the congregation. They are involved in the monthly Messy Church service and our monthly All Age service which is led by young people.

On a weekly basis the church runs Cafe 10, a coffee morning attended by a number of regulars from the Church and the community.

During term time the church runs the only Toddler Group in the village.

In 2025 we expect the completion of a new Trimley Primary School which will replace the existing Trimley St Martin Primary School. As this school will be larger than the present one, it is hoped that it will, along with Trimley St Mary Primary School provide enough educational accommodation for the growing needs of the village. We already have some ties with Trimley St Mary School and look to develop and grow ties with both schools in the future.

About our Churches

There have been two Churches at Trimley St Martin and Trimley St Mary for at least a thousand years, both having been mentioned in the Domesday Book of 1086. These were probably simple Saxon structures. The present buildings date from the fourteenth century but have been changed and extended since this time such that little of the original work can be seen today.

The Parish of St Martin & St Mary Trimley has, since 2014, been part of the new benefice of Walton and Trimley in the charge of a Rector. St Martin's Church is the Parish Church for both villages and used for worship as well as concerts, exhibitions and as a venue for Church meetings.



It was re-ordered in 2007 to include a toilet (with access for the disabled) in the tower and a kitchen area at the back of the church for coffee/tea making after the service on Sundays and for our weekly Café 10 and mid-week Communion service. Half of the nave area had the pews replaced by chairs to give a more flexible use of the area.

There is also an area at the back of the church set aside for young children with plenty to keep them entertained.

St Mary's church which is adjacent to St. Martin's has been decommissioned as a church and the Diocese now rent it out as The Two Sisters Arts Centre. Both churches have their own churchyards (now closed and managed by East Suffolk Council) joined together as one large churchyard and each church has its own memorial garden at either end of the churchyard.

The church is active in raising money for specific causes and towards the end of the financial year, allocates grants to causes of the PCC's choosing with guidance from the treasurer.

The two villages have an approximate total population of 6,000. They are both rural and suburban, looking to Felixstowe for most of their facilities and having excellent links to Ipswich and beyond, both by road A14/A12 and rail. There is a station in Trimley St Mary and regular public transport connections to immediate and surrounding areas. There are great changes ahead in the next 5-10 years for our villages as a substantial increase in housing (approx. 1,200 new mixed housing) is planned.

Other churches within the parish:

There is a Methodist Church in Trimley St Martin.



Community Life in the Trimley Villages

Children

- Trimley Tots - child and parent drop-in centre and pre-schools in both villages.
- Two county primary schools with after school clubs.

Sports and Activities

- Social Club with gym, Bowls Club, Tennis Club, youth and adult football teams.
- Trout lake for fishing, Trimley Marshes wildlife and bird reserve, a network of public footpaths/bridleways
- Trimley Saints Players put on two productions a year.

Community Facilities

- A popular area of charitable allotments for which the incumbent is chairman.
- Various small shops, Village halls, Men's Shed, Stennetts Community Café.
- A community pop-up-shop in the Welcome Hall (which the church actively supports with personal weekly donations of food and household goods.)

Other

- Residential care and supported housing facilities
- An Eastern European workers' hostel

Our Town

Felixstowe, with the adjacent villages of Walton and the Trimleys, lies on the Suffolk Coast twelve miles southeast of Ipswich. Felixstowe and the villages have a population of about 30,000. Once a fashionable Edwardian seaside resort, Felixstowe continues to prosper today.

The Port of Felixstowe: The largest container port in the UK handles 42% of the United Kingdom's container imports on over fifty ship arrivals each week from every corner of the globe. The port is a significant source of employment in ship handling, cargo logistics and support industries, and regularly hosts some of the world's largest container ships.

Tourism: Felixstowe's Edwardian royal connections have created a legacy of many fine buildings and classic seaside amenities which continue to attract both day-trippers and holidaymakers. Substantial recent investment along the seafront continues to make Felixstowe an attractive destination with regular weekend events like the annual Carnival, Armed Forces Weekend, Vintage Car Rally and Art on the Prom. The quaint hamlet of Felixstowe Ferry is home to a Sailing Club and thriving boating community as well as a links golf course.



Mixed good quality housing stock of all sizes, styles and age provide homes for the many who work in Felixstowe and for those who commute to the BT Aadastral Park Research Centre in nearby Martlesham and to Suffolk's County town of Ipswich. The seaside ambience and ease of getting around makes Felixstowe a popular retirement destination too.

Felixstowe town centre has a healthy mix of national chain and local independent shops. Other amenities include a cinema, theatre, two sport/leisure centres, a links golf course and a small hospital. It is served by one high school (Felixstowe School) and a number of feeder primary schools.

Felixstowe is at the eastern end of the A14 trunk road giving access to the Midlands and the North and to London via the A12. Frequent buses link Felixstowe to Ipswich and provide local town services to all areas at the start and finish of their journeys. The town is also the terminus to an hourly branch railway line service to Ipswich which feeds into mainline and regional rail services. Stansted, Norwich and Southend Airports are all within a one to two hour drive.

Colneys Deanery is within the diocese of St. Edmundsbury and Ipswich and lies in the extreme south-east of Suffolk, bounded by the estuaries of two rivers, the Deben on its north-east and the Orwell on its south-west. Ipswich, the County town of Suffolk, bounds the northwest; the North Sea borders Felixstowe in the southeast, and the market town of Woodbridge lies to the northeast.



It is approximately twelve miles from Felixstowe to Ipswich. Some of the deanery is rural, but there are three significant centres of population:

Felixstowe, Walton and the Trimleys, Kesgrave and Martlesham.

New houses are currently being built in most of these areas, which will increase the population significantly.

Led by the deanery leadership team, we support and encourage one another. We meet for chapter once a month, often over lunch, where we pray and discuss any issues and share things to celebrate. Sometimes we include other licensed ministers for social. Deanery Synod is held once a quarter, and we are keen to ensure that no parish feels alone. We discuss ways in which we can support one another.

Recently we have begun the process of creating a new deanery plan which places emphasis on how we support each other in the diocesan 'Growing in God' strategy. The aim is not just to produce another document but for it to be a workable and practical plan. As such, we have effectively started from the beginning, and all parishes are involved in building connections that will be meaningful and long-lasting.

Rev Chris Hood Rural Dean

The Diocese of St Edmundsbury and Ipswich



Where are we?

The Diocese covers the county of Suffolk, excluding the area around Lowestoft in the north-east, and one parish in Essex. It is a mainly rural Diocese with a large number of small villages, plus market towns including Woodbridge, Halesworth, Sudbury and Beccles and the cathedral town of Bury St Edmunds with its historic ruins of the old Abbey. Ipswich is the county town with a population of about 137,000. Suffolk's population is c 650,000. The county embraces historic places of interest such as Sutton Hoo, culture at Snape with the famous annual Aldeburgh music festival, is on the Heritage coast and is a haven for lovers of natural history and birdlife. The busy port of Felixstowe is at the end of the A14 which runs via Cambridge to the Midlands and the A12 which gives access to London and the Norfolk Broads.

Who are we?

We are often known as 'the Church of England in Suffolk'. The diocesan bishop is the Right Reverend Martin Seeley, and the suffragan bishop is the Right Reverend Dr Mike Harrison. Both work from the Bishop's House in Ipswich. They work together closely to help us shape our vision and strategy, and amongst a plethora of other tasks offer regular teaching mornings to nurture the faith of people in our congregations – and a regular Vlog which can be found on Facebook. There are 3 archdeaconries and over 450 churches where visitors will find a wide range of worshipping styles, from the traditional to contemporary, as well as Fresh Expressions and growing numbers of 'Lightwave' groups for those who haven't connected with traditional church previously. The Cathedral of St Edmund and St James in Bury St Edmunds is the mother church of the Diocese and is proactive in offering support to clergy and parishes including welcoming parishes on pilgrimage. We also work closely with our 88 Church of England primary schools. All this is, of course, supported by a small and committed diocesan staff based in the diocesan office in Ipswich.

What is our vision?

Our diocesan vision is to be 'Growing in God', aiming to grow 'flourishing congregations making a difference'. This vision was accepted by Diocesan Synod in 2014 and since then we have been focussing on four key priorities:

- **Growing in Depth:** responding to the call of Christ in every part of our lives
- **Growing in Number:** drawing the contacts we have into the life of God's kingdom
- **Growing in Influence:** reaching beyond ourselves in our impact on the wider world
- **Growing Younger;** building churches whose age-range reflects our communities



Parishes are encouraged to use a simple Mission Action Planning tool to help us all to focus on these priorities and how they might be worked out in each different context. We are trusting God that this vision, underpinned by a commitment to Christian stewardship, will bear fruit as we look to the future.



As part of this vision, we have recently received Strategic Development Funding for two major projects: Inspiring Ipswich, overseen by the Archdeacon of Ipswich which aims to grow the church in Ipswich through church planting and reaching out to those who live in the town, and 'Growing God in the Countryside', overseen by the Archdeacon for Rural Mission. This focusses on nurturing and discipling new Christians through small Lightwave groups and hubs such as the one being established at Bungay. (The Growing in God in the Countryside project plan is available among the documents at www.light-wave.org/vacancies)

We have also been part of a pilot scheme exploring how we can use our church buildings more creatively both for those who worship regularly and for the benefit of our communities and many churches have benefitted from this. We are broadening our vision through a growing partnership with the Diocese of Kagera in Tanzania, with fruitful visits and links being established.

How can we fulfil our "Growing in God" vision?

We value our huge range of different ministries: we have over 100 stipendiary clergy, plus many SSM and PTO clergy as well as lay and ordained chaplains who can be found in such diverse places as schools, prisons, hospitals, hospices, the army, RAF and the police. Some clergy are ordained to serve in their local benefice through our pioneering 'auxiliary ordination pathway' which enables people's vocations to ordained ministry to be discerned within the Diocese.

All clergy work alongside lay ministers – Readers, elders, and the growing number of people exercising recently introduced licensed ministries: pioneer ministers, evangelists, youth ministers and children's and family workers. Our ministry deployment principles encourage teams or clusters of lay and ordained ministers to work together so that clergy feel less isolated and ministry resources the mission of the church more effectively. We are just beginning to develop the principle of 'local ministers' in our benefices, releasing people's gifts to serve in their locality. We are excited about these new developments which are playing an important part in our diocesan vision of Growing in God.

So, in summary:

As our Growing in God vision states, we aspire to be people who know that 'God is with us, gathering us as Christ-centred communities, calling us to make Christian disciples, sending us in loving service, empowering us by the Holy Spirit'.



The diocese of St Edmundsbury and Ipswich strongly encourages all incumbents to promote the growth of small missional groups and fresh expressions of Church in their benefices. "Lightwave" has been created with a diocese-wide Bishops Mission Order in order to support clergy and lay people to work together in mission-shaped communities, reaching out in innovative ways.

The Lightwave Community meets in small groups in homes, pubs, offices, schools and other places and complements other ways of being church. The name of the community comes from the idea of lightwaves being the way in which light spreads into dark places. Lightwave is committed to shining the light of Jesus in Suffolk through acts of kindness and practical service as well as worship and witness.

Each lightwave group aims to do one activity together to bless their local community and to share faith in their locality or network. Each group receives support and training in their outreach through a growing network of coaches. Each is mainly concerned to bless people who are exploring faith for the first time, while simultaneously cooperating closely with local parish churches and others. The Lightwave Community is being developed through a Project called "Growing in God in the Countryside" funded by the Strategic Development Unit of the Church Commissioners until 2025. While both urban and rural Christians are part of this community, there is a particular focus on helping 1500 new disciples come to faith in rural areas in the period of the funding. Many Lightwave groups are planting fresh expressions of Church. The understanding is that such fresh expressions of Church will be new or different ways of being established primarily for the benefit of people who are not yet members of any church.

The Lightwave Community is developing three Rural Hub Churches, in different parts of rural Suffolk. These create and support the development of the small missional groups in the whole surrounding area and to intentionally provide sufficient critical mass for particular ministries which are currently under-represented in rural churches, for example with young adults and those in lower income brackets.

The Lightwave chaplaincy team support those involved in farming and rural business. Every part of the Lightwave Community has a vision for the great wave of God's love, bringing light to our county.

Loverural is about "making Jesus visible through loving action" in the Suffolk Countryside. It is part of the diocese's strong commitment to rural areas. Loverural has 3 strands:-



- a)** Drawing attention to the enormous role of the rural Christianity in building social capital
- b)** Acting as a convenor for projects and congregations in the countryside including those of different streams and denominations so that good rural practice can be shared, and mutual support offered.
- c)** Enabling those engaged in Christian-based social action to gain confidence and wisdom in how to make exploration of the Christian faith accessible to those engaging with their initiatives.

www.lightwave.community