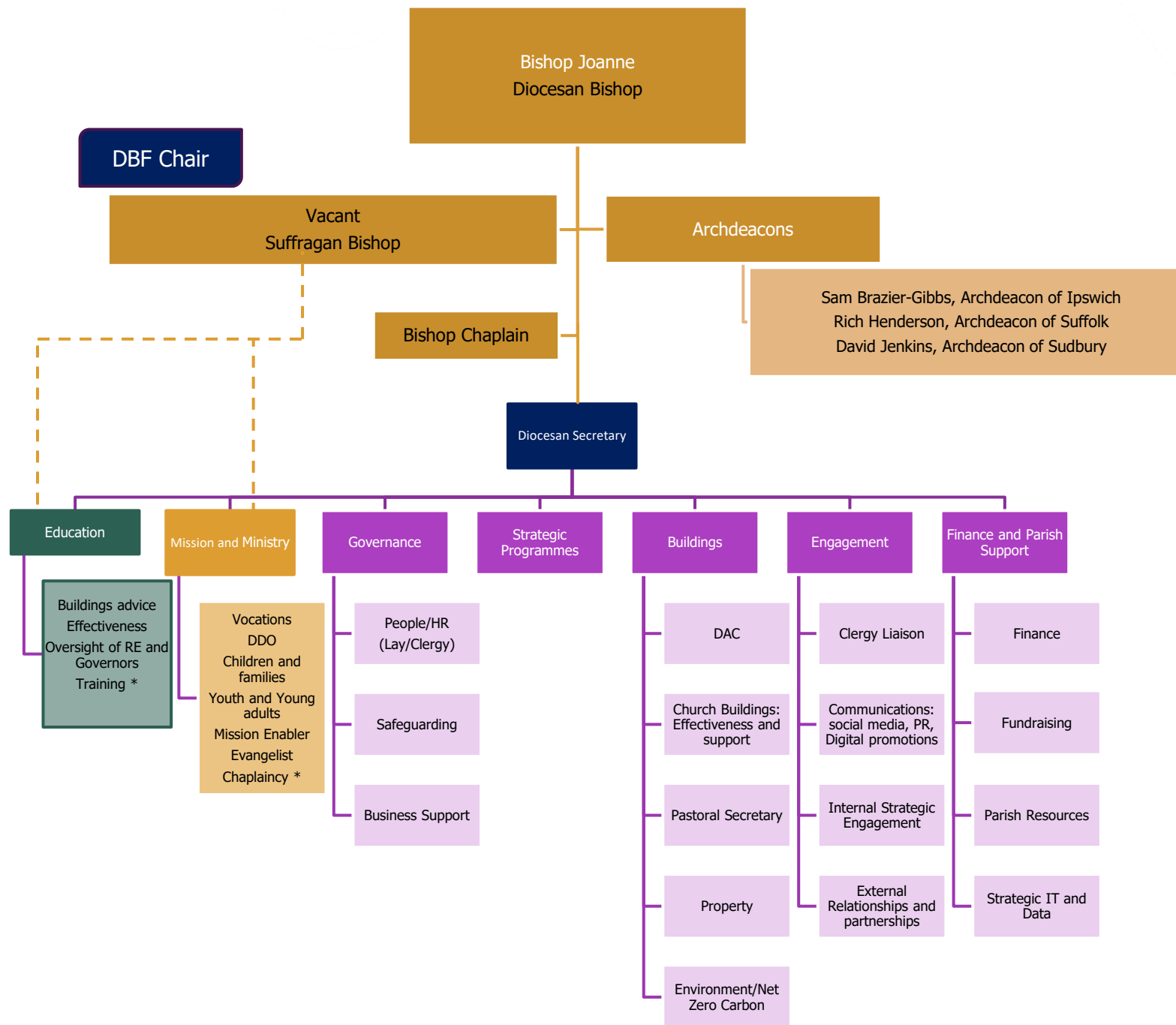


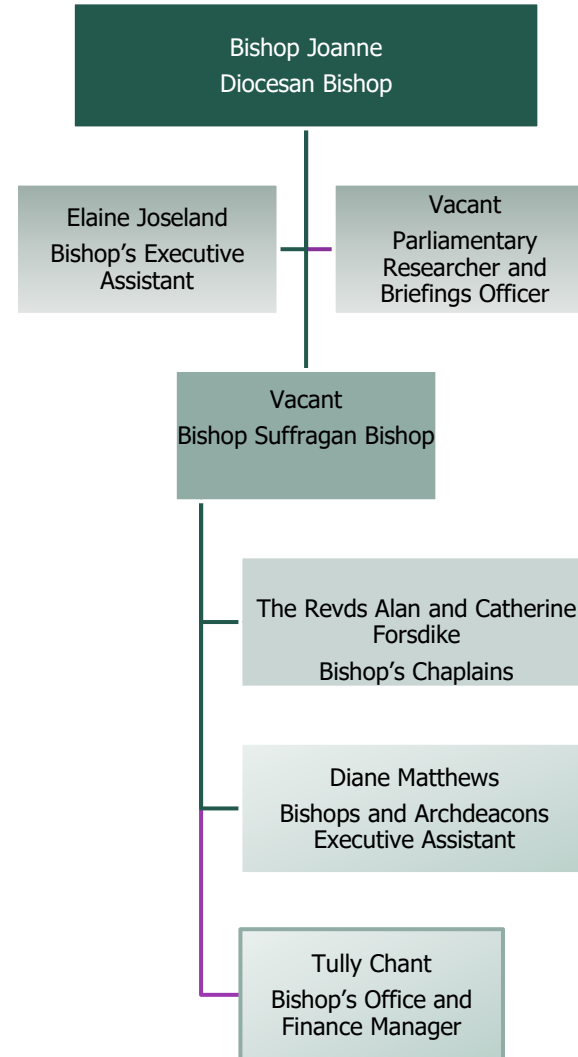
Growing in God / Cultural Change



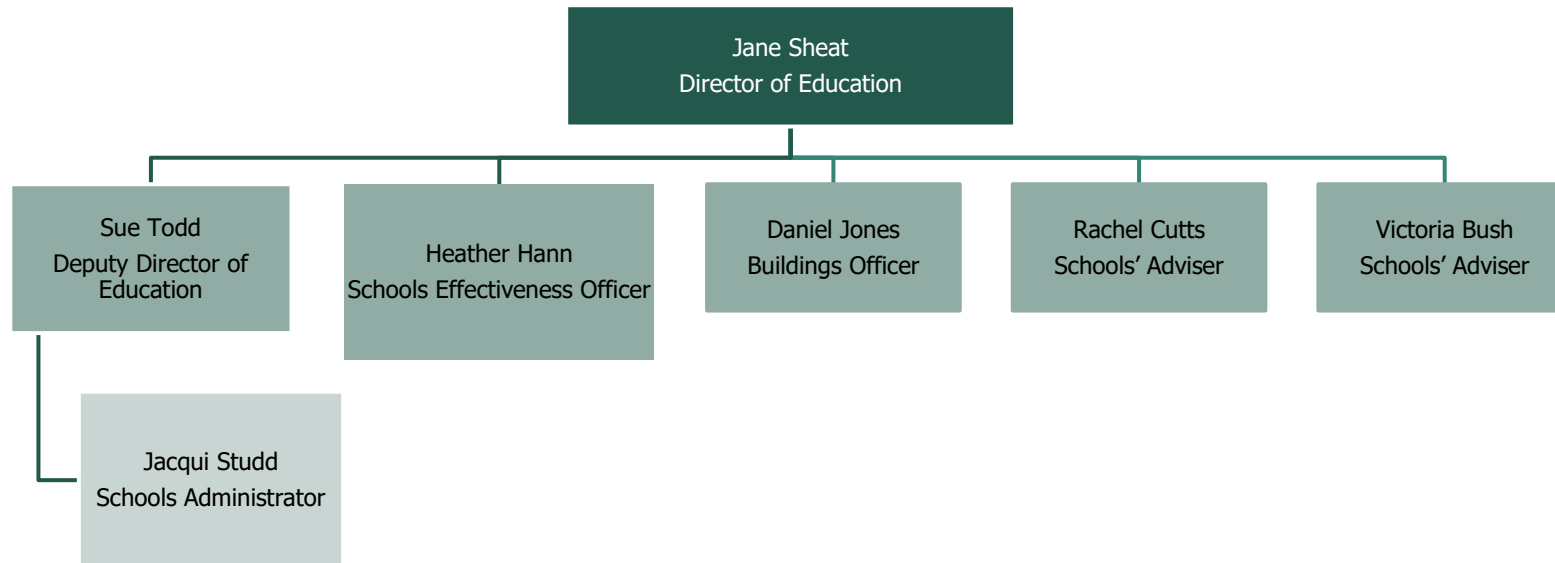
Not an exhaustive list of all areas of activity.

Updated: 8 January 2026

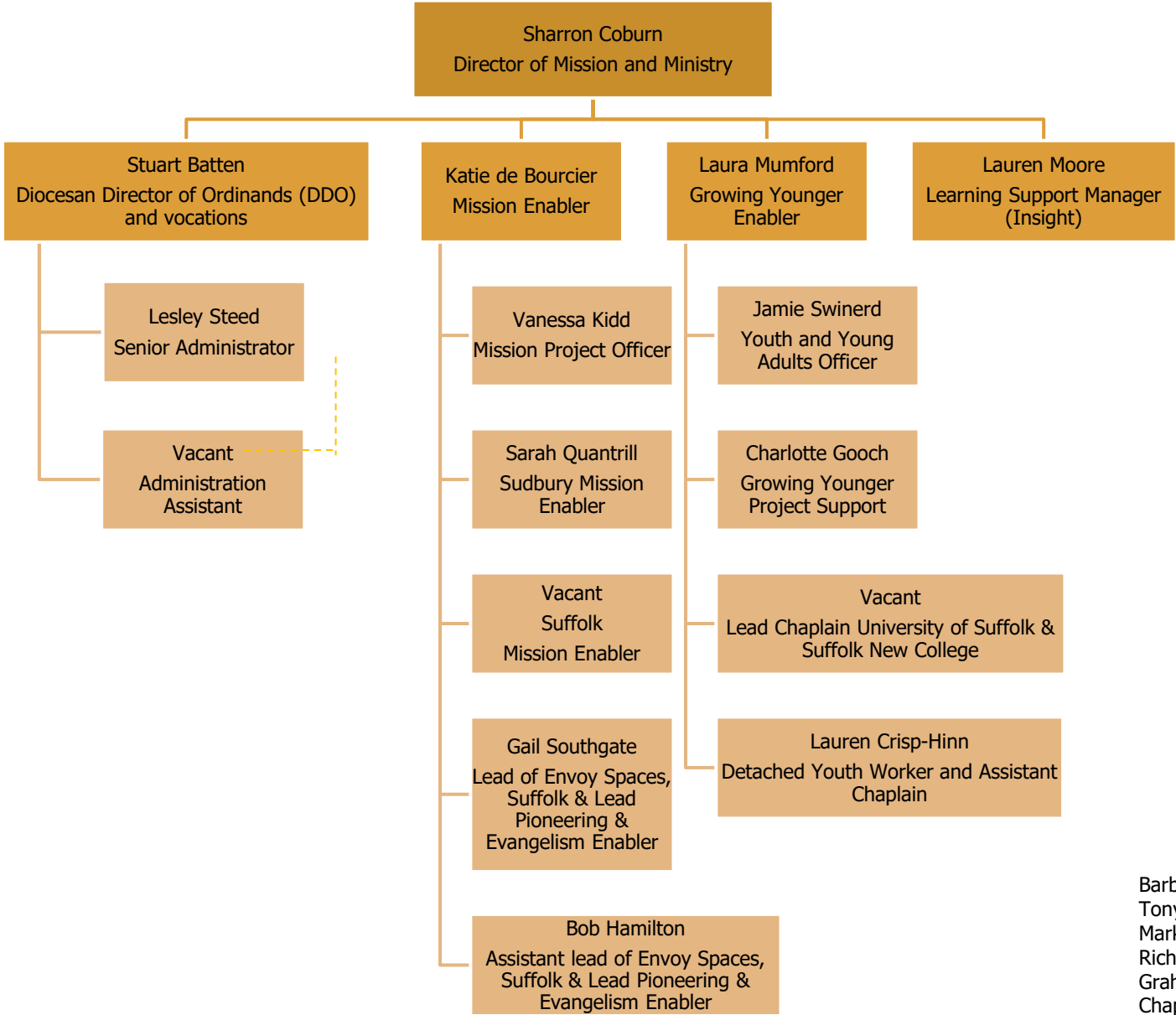
Bishops' Office Team



Diocesan Board of Education



Mission and Ministry

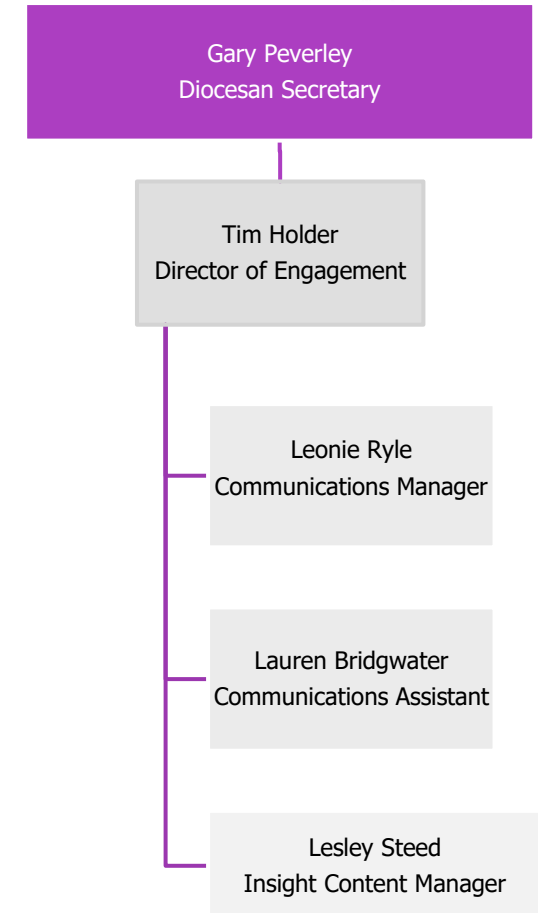


Barbara Hill, Deputy Warden for Readers
Tony Redman, Bishop’s Advisor for Self-Supporting Ministry
Mark Sheard, World Mission Officer
Richard Hubbard – Music
Graham Miles, Rural Chaplain
Chaplain, King Edward IV School Bury St Edmunds

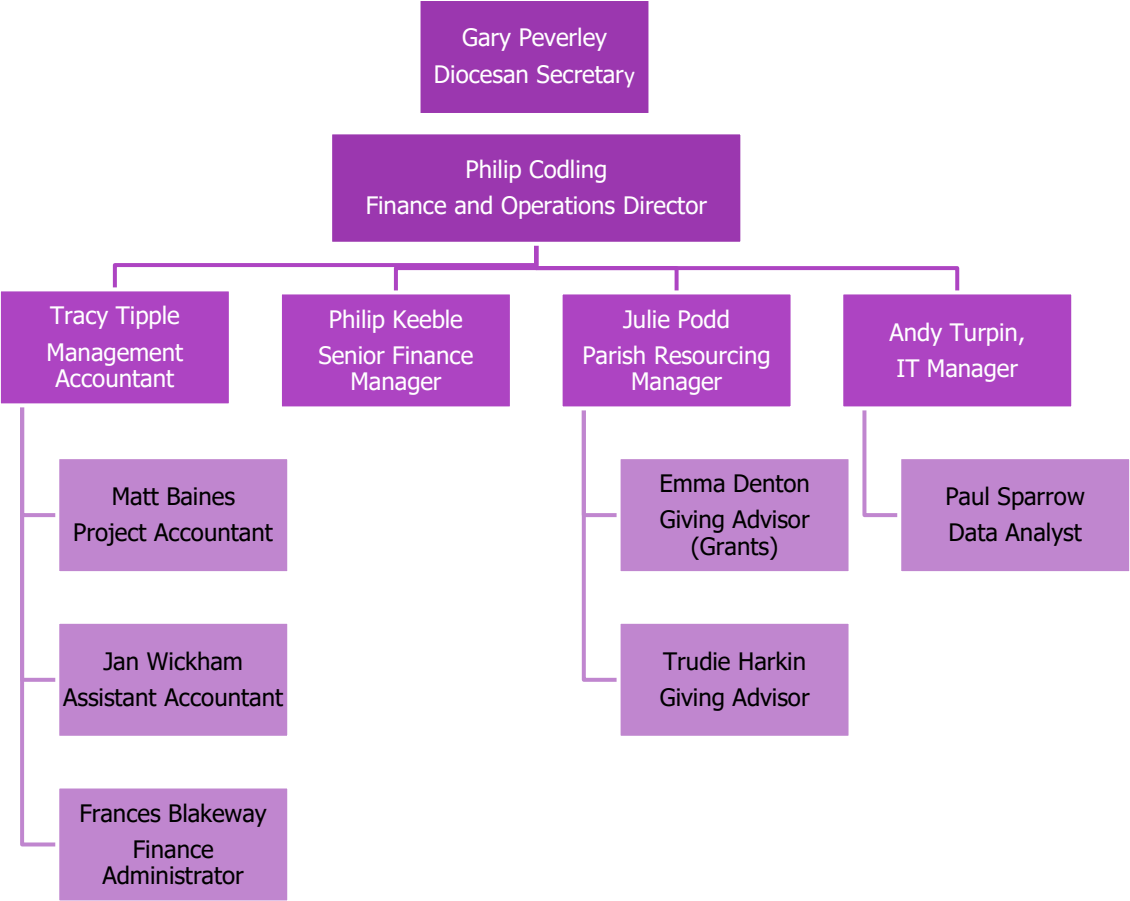
Safeguarding team



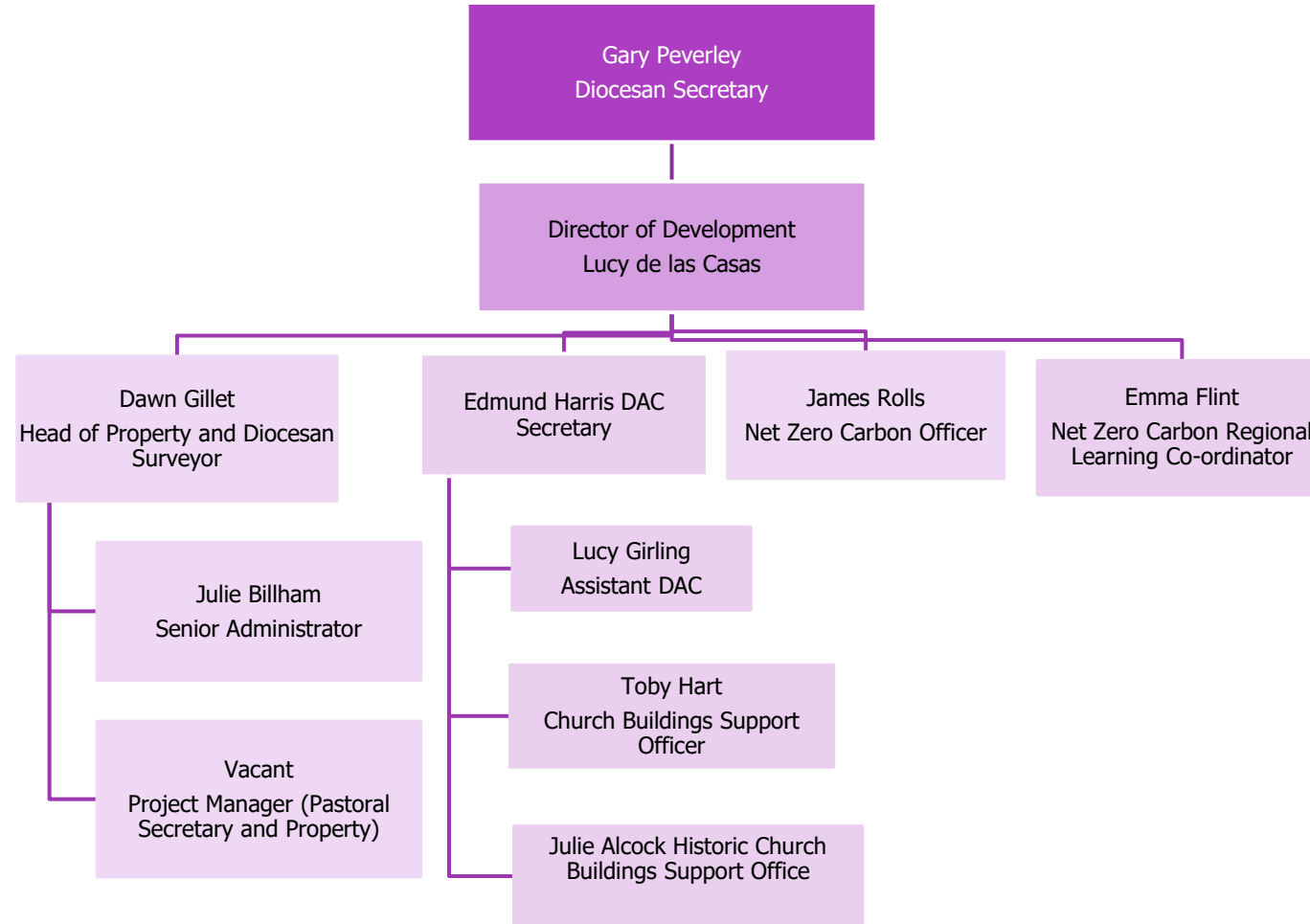
Engagement and Communications



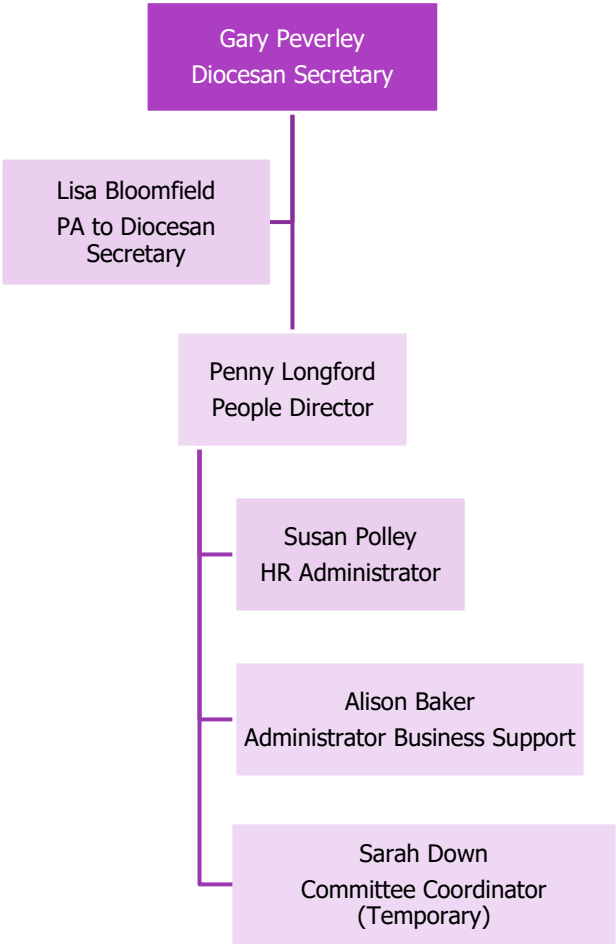
Finance, IT and Parish Resources Team



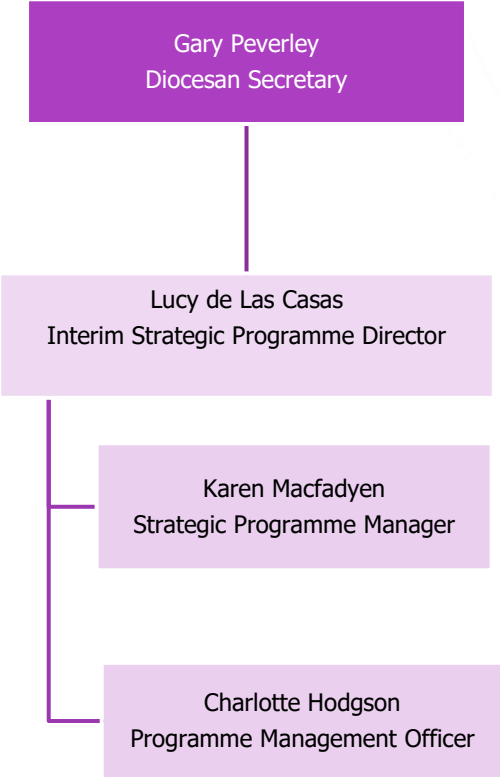
Church Buildings Support Team & Property



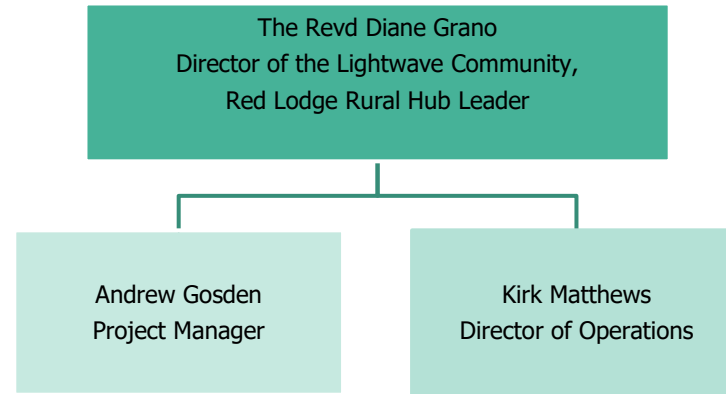
HR Governance



Strategy Programme Boards



Lightwave Community



James Aggett Café Manager, Red Lodge
Alison Earl, Co Leader Mission Assistant, Red Lodge
Ben Wale, Emerge Lightwave Rural Hub Leader
Heather Land, Choir Director, Bungay Community