

# BENEFICE PROFILE

the benefice of saxmundham with kelsale-cum-carlton

ONE CHURCH

four congregations

St Peter, St Mary & St Peter, St John, Connections

## Saxmundham with Kelsale-cum-Carlton



Our Benefice is full of people who mix and match well together  
on so many different levels.

We are all looking for someone who can show us the way to become a growing church;  
someone to take us by the hand and say, "I will walk with you and work with you to  
reach out and help people encounter God in a way that will reshape their lives."

Summer 2020

# TABLE OF CONTENTS

Introduction .....	3
The People .....	4
Who are we? .....	4
Challenges for our new leader .....	5
Support for our new leader .....	6
How we support and nurture each other .....	6
Safeguarding .....	7
Electoral Roll .....	7
Our worship .....	8
Church in Lockdown .....	11
Service Pattern (before Covid 19 lockdown):- .....	12
Service Pattern (since Covid 19 lockdown):- .....	12
Salt and Light .....	13
Local Activities .....	13
Our Mission Partners are: - .....	14
It's all about the People .....	14
The Places .....	17
Buildings .....	17
The Local Area .....	22
The Deanery .....	26
The Diocese (including 'lightwave' and 'loverural') .....	27
Where are we? .....	27
Who are we? .....	27
What is our vision? .....	28
How can we do this? .....	28
Glossary .....	31

## INTRODUCTION

This Benefice Profile is a little bit like the Bible really, in terms of it being written by a variety of authors in a variety of styles but harmonizing into a true and full picture of who we are in our little bit of God's Kingdom!

The "Profilers" are four men and five women including Churchwardens, Lay Elders, a Lay Pioneer Minister, a Town Pastor, and 'preachers-in-training'; a group of nine individuals who have pooled their memories and hopes to paint a picture for you of what you might expect if you were to become our Priest in Charge. Reflecting the Benefice as a whole, the "Profilers" come from a range of denominational backgrounds and all are hopeful of seeing some sort of harvest of people finding new life in Jesus and rest for their souls.

As you may have realized, there is a lot of overlap in our stories - much like the people in our congregations who mix and match well together on so many different levels, and we are all looking for someone who can show us the way to become a growing church. Someone to take us by the hand and say, "I will walk with you and work with you to reach out and help people encounter God in a way that will reshape their lives."

Might this 'someone' be you?

If so, then read on! And if what follows interests and excites you, we'd like to meet you. Growing in God is no easy thing or else the country would be in revival already; but if you'll come and do mission with us, be church with us, maybe we could see a repeat of what happened in the Book of Acts... together!



Good Friday, 2018

## THE PEOPLE

### WHO ARE WE?

We are an enthusiastic and committed church family consisting of four overlapping congregations meeting in our three church buildings and the local Primary School.

We welcome and celebrate the diversity of traditional Parish Church and Fresh Expressions café style Church, seeking to grow in love and faith through our relationship with Christ and each other. We are a diverse group of people from different backgrounds yet drawn together by our desire to grow in God through our different forms of worship and service. We endorse the Diocesan 'Growing in God' initiative to grow in depth, grow in number, grow in influence and grow younger.




Across the Benefice we have a broad leadership team of nine Lay Elders, an Assistant Priest (SSM but near full-time), a Priest with Permission-To-Officiate, a Lay Pioneer Minister and, most recently, a Lay Evangelist. Some of this group along with others make up the five people who are currently embarking on a local diocesan course to enable them to preach in church.

Leading prayers, reading, sidesperson's duties, serving coffee, technical assistance, cleaning, gardening, and so many other practical tasks are all carried out by willing volunteers. There is a family sense of shared responsibility across the Benefice. We long to see the Kingdom of God grow amongst us and in our community, so we are looking for a leader who is passionate about Jesus, and someone who will bring new life to our vision as well as bringing their own fresh ideas.

f LIVE @ConnectionschurchSaxmundham

**JESUS is** hope

*Grab a coffee, sit down and we'll be ready to start at 10*

JESUS IS   

Sunday 5<sup>th</sup> July

CONNECTIONS CHURCH  
part of St Johns Church family

---

## CHALLENGES FOR OUR NEW LEADER

The apostle Paul teaches that no one person is every-part of the body. A church cannot be healthy if it is led by a one-man-band. That said, we're looking for the following in our new leader (in no particular order):-

- ✓ a person of prayer
- ✓ a person who is sensitive to the needs around
- ✓ a team player who likes a lively ministry team – Clergy and Lay
- ✓ someone who is committed to mission and hungry to see people come to Christ
- ✓ a person who is collaborative by nature and who is eager to work with all the gifts God has already given us, developing 'every member ministry' across the Benefice
- ✓ someone who will see the Benefice as “one church - four congregations”
- ✓ a person who appreciates both the new and the traditional, and who can help us discern what to preserve and what to leave behind
- ✓ someone who recognises there are a variety of ways and variety in worship that are pathways to growth
- ✓ someone who - with everyone else – can embrace personal growth and change
- ✓ someone who will help us develop the Diocesan 'Growing in God' initiative
- ✓ a person who will assist people to move beyond casual engagement to being church - from activities to discipleship
- ✓ someone who will put children first, helping us to engage with families in the community; tending the green shoots of our youth work, enabling them to blossom and flourish
- ✓ someone who can help us reach out to the older community
- ✓ a person who can help us find our direction and channel our energy effectively in the post-lockdown future

So Christ himself gave the apostles, the prophets, the evangelists, the pastors and teachers, to equip his people for works of service, so that the body of Christ may be built up until we all reach unity in the faith and in the knowledge of the Son of God and become mature, attaining to the whole measure of the fullness of Christ.

(Ephesians 4:11-13)

---

## SUPPORT FOR OUR NEW LEADER

The Benefice greatly benefits from a strong Ministry Team and, in addition, our new leader can be assured of a friendly and warm embrace from all the Benefice Members and the full support of the two PCCs, the Lay Elders, the Pastoral Care Team, Homegroup Leaders and the Connections Leadership Team.

---

## MINISTRY TEAM

- An Assistant Priest  
Rev. Nic Stuchfield – a member of the St John’s congregation who trained, became curate in the Benefice and was licensed as Assistant Priest in May 2020
- A Lay Evangelist  
Mr Mark Stancombe Duhm - soon to be licensed
- A Lay Pioneer Minister  
Mr Tom Boswell – licensed leader of Connections Church
- A Retired Priest  
Rev. Pam Peeling - Permission to Officiate within the Benefice
- The Rural Dean  
Rev. Sheila Hart – for whom St John’s was her sending church. Currently SSM Assistant Priest in the neighbouring Alde Sandlings Benefice

---

## HOW WE SUPPORT AND NURTURE EACH OTHER

- Nine homegroups (encompassing a total of 63 people) of which four were originally formed after Alpha or other outreach courses. Homegroups meet on a regular basis for prayer and Bible study and also occasionally lead services, run fund-raising events and organise community support projects
- An annual Lent course often runs with other churches in the deanery
- 15 trained pastors (Lay Elders and others) (augmented to a total of 23 during the COVID-19 pandemic) who have been actively providing pastoral and practical support to members of the congregations and others during lockdown and since
- A men’s group meet monthly for social events [in lockdown, *more* often on Zoom]
- There are two children’s groups at our Connections Services
- Wholeness and Healing team ministry at church services or by phone link
- Other interest groups meet regularly including a craft group, a book group, a scrabble and board games group

- Parish weekends away. We have close links with Sizewell Hall Christian Conference Centre just six miles away, and we enjoy a residential weekend there every two years



Sizewell Weekend, 2019

- Both Parishes create time for fellowship at our services as often as we can ... coffee and ubiquitous cake.
- Our weekly newsheet – The Benefice News – has become an e-mail with the back-up of printed deliveries to those without internet access. Our Rural Dean and our PTO have included a very helpful reflection in each issue.

---

## SAFEGUARDING

Saxmundham Benefice churches have sought to comply with the safeguarding guidelines that came out of the “Promoting a safer church” document. (Archbishops Council, 2017).

We have a statement of safeguarding (policy).

Required online and face to face training has been completed by a significant number of our volunteers and church officers. DBS certificates have also been obtained where necessary.

Safeguarding is an important part of our Benefice ethos.

We have no safeguarding issues currently ongoing.

---

## ELECTORAL ROLL

- St John the Baptist and Connections, Saxmundham. Electoral roll: 107
- St Mary and St Peter - Kelsale, and St Peter - Carlton. Combined electoral roll 43. (Kelsale and Carlton Churches are a united parish)

... and even here we have an overlap of people ...

## OUR WORSHIP

All the congregations in the Benefice are broadly evangelical. On a typical Sunday at St John's we would expect a total attendance of 50+ (morning and evening service), at Connections around 50, and at Kelsale 20+.

Connections at Saxmundham Primary School is organised and led by our Lay Pioneer Minister and a team of volunteer lay members. The leaders meet regularly for prayer and planning.

The descriptions below refer to the Worship Service pattern as it was prior to the beginning of lockdown. In line with Diocesan guidance, we will be evaluating what our new pattern of worship will be in the "new normal".

---

### IN SAXMUNDHAM AT ST JOHN'S



Common Worship services are used, mostly projected at morning services and from an adapted booklet in the evenings. There is an organist or recorded music and a small, unrobed choir at all morning services.

First and third Sunday mornings are opportunities for the Connections and St. John's congregations to worship together.

To express our praise, we value a mix of contemporary and traditional songs and hymns.

The evening services are more informal and most frequently conducted by Lay Elders, leading and speaking. We have a keyboard player at most evening services.

One of our Lay Elders leads a quarterly 'Music with a Message' service on a Sunday evening; a time that involves much cake, guided discussion and worship, with people seated around tables.



## IN SAXMUNDHAM AT CONNECTIONS CHURCH - A FRESH EXPRESSION

Connections Church meets in the local primary school three Sundays a month. This is an established fresh expression of church which has been running in various forms for around ten years and has been officially Connections Church for four years.



Connections was set up to serve the estate in which it meets. It has since grown to draw people in from all around the area. The ethos is to provide a welcoming and relaxing environment in the style of Café church where people will feel comfortable themselves and feel very comfortable to bring along friends. Fresh coffee, croissants and cake are provided before every service. Attendance includes a wide range of age groups, and a number of families, so providing good children's and youth work is important.

Connections is run purely by volunteers and is headed up by our Lay Pioneer Minister and his wife with a lay leadership team which consists of seven others. Our Lay Pioneer Minister has been licensed

by the diocese and three of the leadership team are now also authorised to preach in the Benefice. This is a key part of developing leaders within the structure.

Our services consist of worship, discussion round the tables, prayer times, fun and games, teaching and sharing life together. We see the importance of making the services accessible to both believers and non-believers and pride ourselves on our warm welcome! Just prior to lockdown, the leadership team had begun working with Archdeacon Sally Gaze to establish the best way for Connections to be able to include Communion as part of its fresh expression worship.

Connections also sees the importance of being part of the community, so therefore we try to get involved in events that happen in the area. An example of this is running the refreshments stall at the primary school's Christmas and summer fetes. We had planned an outdoor movie night (sadly cancelled due to Covid!), we have run family quiz nights, Crib services at Christmas, carol singing and an annual Easter holiday club where all members of the Benefice get involved. We have seen over 100 children attend each day most years! We host newcomers' meals, Alpha and Bible Groups to name but a few... and we've run a stall at the EDF Family Fun Day.

Connections always strives to move forward, to constantly be fresh and inviting but always walking in God's will for what he has planned for us.

---

## IN KELSALE AT ST MARY AND ST PETER'S



Never in a rush to get away...

There is a service every Sunday morning. Common Worship Communion is held three times a month on Sundays at either 9.30am or 11.00am, and on the third Sunday there is a 9.30am Family Service. When there is a fifth Sunday, a Benefice CW Communion is held in rotation between the three Churches in the Benefice. The PCC is open to review this pattern. Our congregation is

predominantly elderly and numbers around 20-25 on average. We have an organist on two Sundays of the month; on the other Sundays music is provided electronically via a tablet. However the music is provided, the congregation sing enthusiastically. Some of our number attend the weekly Benefice Thursday Morning Prayer at 9.00am. During the winter months this is held in Saxmundham, moving to Kelsale in the warmer summer months.

Other midweek services in the Benefice include Maundy Thursday, Good Friday, Ascension Day.

---

## IN CARLTON AT ST PETER'S

As there is no lighting or other utilities, the pattern of services is limited to evening services and events between Easter and August, apart from an afternoon candlelit Carol Service in December. Holy Communion is celebrated every third Sunday, with the remaining Sundays offering parishioners a time for prayer, meditation and quiet, much in the original tradition of the chapel. More structured evening services would be welcomed.

---

## OCCASIONAL OFFICES ACROSS THE BENEFICE:

Typically two or three Baptisms, twelve funerals, up to five weddings. During the last five years, five members of the congregations have come forward for confirmation.

The Benefice has been the source of ministers for formation as Priests (one of whom is now the Rural Dean) and training as Curates (one of whom is now our SSM Assistant Priest), as well as a very large number of active Licensed Lay Ministers.

---

## CHURCH IN LOCKDOWN

During the Covid-19 lockdown the technical skills of our clergy, Churchwardens and lay team have enabled our Benefice to move online. St John's and Kelsale cum Carlton have combined with a 9.00 am joint service and Connections Church has streamed live from the leaders' lounge at 10 am.

The combined 9.00 am service started up (immediately after the Benefice became vacant) with the leadership of our Assistant Priest and his wife, and our Rural Dean and her husband. Other Lay Elders joined in the leading and speaking, homegroups led whole services and members of all our congregations helped out with recording readings, prayers, reflections, music and interviews.

We have had Zoom Coffee and Cake after Connections, and our Assistant Priest hosts a Zoom session to further discuss the morning sermon Bible reading each Sunday evening.

The new circumstances have triggered a greater freedom to share outside of previous patterns and the people involved in the 9.00am service and Connections have provided joint services. We are now actively developing a technical ability to integrate the physical church congregation with the online congregation, in real time. It has been possible for us to attend and participate in the whole range of services rather than having to choose one over another.

Several of the Homegroups, the Book Club, the Men's Group, the Thursday Morning Prayer Meeting and the Church Wardens and Assistant Priest have been meeting on Zoom throughout the lockdown.



Enjoying an online Bible Study

---

## SERVICE PATTERN (BEFORE COVID 19 LOCKDOWN):-

### 1st Sunday

9.45 am	Family Service	Saxmundham Primary School
11.00 am	Holy Communion (CW)	St Mary and St Peter, Kelsale
6.30 pm	Holy Communion (CW)	St John the Baptist, Saxmundham
6.30 pm	Open church	Easter to Harvest: St Peter, Carlton

### 2nd Sunday

9.30 am	Holy Communion (CW)	St Mary and St Peter, Kelsale
9.45 am	Connections	Saxmundham Primary School
11.00 am	Morning Praise	St John the Baptist, Saxmundham
6.30 pm	Evening Worship	St John the Baptist, Saxmundham
6.30 pm	Open church	Easter to Harvest: St Peter, Carlton

### 3rd Sunday

9.30 am	Family Service	St Mary and St Peter, Kelsale
11.00 am	Holy Communion (CW)	St John the Baptist, Saxmundham
6.30 pm	Evening Worship	St John the Baptist, Saxmundham
6.30 pm	Holy Communion (BCP)	Easter to Harvest: St Peter, Carlton

### 4th Sunday

9.30 am	Holy Communion (CW)	St John the Baptist, Saxmundham
9.45 am	Connections	Saxmundham Primary School
11.00 am	Holy Communion (CW)	St Mary and St Peter, Kelsale
6.30 pm	Evening Worship	St John the Baptist, Saxmundham
6.30 pm	Open church	Easter to Harvest: St Peter, Carlton

### 5th Sunday

10.00 am	Holy Communion (CW)	In rotation around the Benefice
----------	---------------------	---------------------------------

---

## SERVICE PATTERN (SINCE COVID 19 LOCKDOWN):-

This pattern is true at the time of writing but it's evolving as requirements and restrictions change across the nation.

### Tuesday

9.00 am	Morning Prayer	Kelsale Lych Gate (since June)
---------	----------------	--------------------------------

### Thursday

9.00am	Morning Prayer	ZOOM (since late-April)
--------	----------------	-------------------------

### Sunday

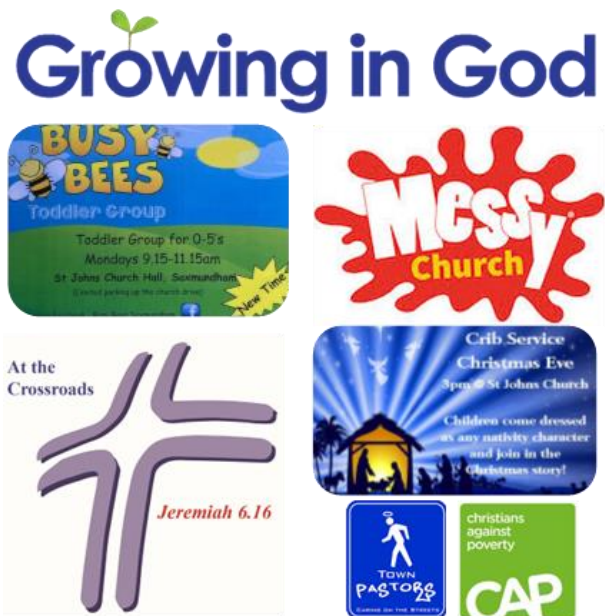
9.00 am	CW "Church" service	YouTube via St John's website
10.00 am	Live in the Lounge	Connections' Facebook page
10.30 am	Holy Communion (CW)	One of the churches (since July)
6.30 pm	Unpacking the Word	ZOOM (since June)

## SALT AND LIGHT

As a Benefice we try to be salt and light in our local area

### LOCAL ACTIVITIES

- We created and manage the Suffolk Coastal Debt Centre (working in partnership with Christians Against Poverty)
- We help to run a local food-bank, in partnership with the Trussell Trust
- We help to staff the Town Pastors service in our neighbouring town of Leiston
- We provide Baptism and Marriage Preparation
- A weekly after school drop-in club has been running for a short while for school years 5-7, "The Hub"
- We run two Parent and Toddler groups which are both well supported and culminate in a crib service every Christmas Eve
- Kelsale cum Carlton parish runs Messy Church each term as an after-school event in Kelsale CEVC Primary School, as part of a wider relationship between the School and the Church (assemblies, special services, chaplaincy support during lockdown). (The incumbent is an ex-officio governor of the school)
- Our Open the Book team takes assembly in Saxmundham and Kelsale schools once every half term, and we support our schools with their fund-raising events
- 'At the Crossroads' is our busy coffee and bookshop on the high street, and is normally open six mornings a week. It also provides a venue for other care provision such as a Bereavement Café once a month
- Monthly Solos lunches are held in St John's Church Hall after the third Sunday morning service. This is open to all the community: anyone who is alone on a Sunday and would like company
- We offer a Listening Ear counselling service
- Covid-19 lockdown has triggered a huge wave of community and church linked social action – phone partners, shopping and prescription collection
- We are a named partner, and well represented in the volunteer team, in the IP17 Good Neighbour Scheme based at Sax'cess House – a new and very active community hub, which includes running a community fridge scheme.



---

## OUR MISSION PARTNERS ARE: -

The PCCs are committed to using their resources to support other Christian organisations in mission, with St John's having for the last few years tithed its own giving income. This is achieved after an unbroken record of paying our Centenary (Diocesan) Share in full. These are some of the charities that we have supported in the last 12 months:

- Local: -                   The local Food Bank and other local welfare charities
- National:-                Care for the Family
- International:-        MAF: Mission Aviation Fellowship,  
STOW: Supporting Tanzanian Orphans and Widows and  
The Dykema Family OMF

And as well as responding to emergency funding needs we fundraise for The Children's Society, Ipswich Night Shelter, Samaritan's Purse (The Shoebox Appeal), Christian Aid and the Toilet Twinning Initiative.

---

## IT'S ALL ABOUT THE PEOPLE

... if a picture paints a thousand words ...









# THE PLACES

## BUILDINGS

### THE RECTORY

The Rectory is an attractive modern four-bedroom detached house on the edge of Saxmundham and is within easy walking distance of St John the Baptist church. The accommodation in the house is as follows:

- Spacious Hallway with stairs to first floor with main Reception Rooms leading off it
- Study with fitted shelving and desk unit overlooking the front garden
- Large Living Room at the front of the house with fireplace and patio doors leading to the side garden. Double glazed doors leading to Dining Room overlooking rear garden, with separate door from Hallway. Wood block floors in all Reception Rooms, fitted carpet in Hall
- Kitchen with white fully fitted base and wall cupboards, fridge and slot-in gas stove, and large breakfast area
- A Utility Room leads from Kitchen with access to the garden and the rear door of the Garage where the gas fired boiler is situated. A ground floor Cloakroom is situated off the Hall, along with another small Utility Room, with plumbing for a dish washer
- Spacious Hallway with stairs rising to First Floor, where there are three generous Double Bedrooms, and one Single Bedroom all with fitted wardrobes and hanging rails. There is a separate Bathroom and WC, and a large Linen Cupboard, with hot water cylinder. Fitted carpet to Landing and all Bedrooms. All main rooms have high quality curtains fitted, with curtain poles in ground floor rooms
- There is a single garage and large front garden with parking for four vehicles and a large, secluded garden to the rear.



---

## SAXMUNDHAM – ST JOHN THE BAPTIST

St John's is a mediaeval church just up the hill from the Town Centre.



The church is much changed from the original which was recorded in the Domesday Survey of 1086. Little evidence of this Norman or possibly Saxon Church remains, although some masonry can be seen in the lower stage of the tower which may be of this date.

There is a crisp 19<sup>th</sup> century feel to this church now in the sea of headstones. It was subject to an 1870s restoration at the hands of Diocesan architect, Richard Phipson. However, Phipson was more sensitive to the need to preserve medieval survivals than his successor Herbert Green, and so the church is also full of interest.

More recently, at the start of the 21<sup>st</sup> Century, there has been a splendid reordering and restoration of the Nave, with wooden flooring and modern chairs set sparingly and flexibly in the light; this had been a rather a gloomy space. The Church can offer refreshments after the Services due to the newly formed kitchen/server at the rear of the South Aisle.

A new roof covering (slate and lead) to the Nave, Chancel and South Aisle has been possible thanks to a major Lottery award and restoration of four of the windows is almost complete.



Alongside the small car park, the church hall contains two well-proportioned rooms and a kitchen. These have recently been redecorated and can be used by the church family or hired out to other local societies.

---

## KELSALE CUM CARLTON – ST MARY AND ST PETER’S

The Church of St Mary and St Peter is admired and appreciated by many visitors for its large, light interior, the ‘Arts and Crafts’ rood screen, septych, pews and windows, and especially our two pre-Raphaelite windows. It is usually open every day and its setting above the village in its extensive open churchyard (about four acres) makes for a haven of peace. The building is Grade 1 listed, and is in reasonably good order. Following our most recent Quinquennial there are some areas which need addressing over the next few years, such as the roof and the floor. We are also working towards putting in mains water and drainage in order to have a toilet and kitchenette installed. The Lych Gate, which is a unique Arts and Crafts structure, is the first sight as you approach the Church up the hill from the village, and is Grade 2\* listed – this was fully restored in 2014 and is in excellent order. There is no Church hall in the Parish but when required we hire the Village Hall.



The organ is very special indeed, Grade 1 listed, and is rated in the register of the British Institute of Organ Studies as being an instrument of national importance and one deserving of careful preservation for the benefit of future generations.



In 2014 we formed a Fund Raising Committee, and each year it arranges up to three concerts in the Church, and each Spring Bank Holiday a Flower Festival is mounted on a different theme. All these events are very popular with the Benefice and beyond. Other fund-raising initiatives are promoted from time to time. Each Harvest for many years we have held a Harvest Supper in the Village Hall for the Benefice as well as the village – this is always popular. During Advent, a Carol Concert is arranged, also in the Village Hall, for the local community.

Once a term we have a Messy Church event held in Kelsale Primary School, which is Church of England Voluntary Controlled (CEVC). We started Messy Church in 2014 and have had varying success. However, since moving to the school in early 2019, the numbers have grown significantly. We have a fairly small team of volunteers from the Parish, plus a couple of others from Saxmundham Parish, who lead this and are hoping to grow the team so that we could look at increasing Messy Church to two sessions a term. The staff at the school are very supportive and help with this Fresh Expression.

At least once a term the Primary School comes to a special service with all the children, teachers, mums and the occasional dad. There is a good rapport and link with the school.

A new Headteacher was appointed in 2019 and she is forging ever closer links with the Church. The school are not only asking for more services in the Church but are also bringing various classes up to learn more about what goes on in the Church, and some of its history.

Ms Clare McMeekin, Headteacher at the Primary school, writes:-



*We hope that the new Incumbent will be willing to be part of our school community and to join us regularly for school assemblies, welcome us to the church for special celebration services and to explore and learn about the building. We hope that he/she will be keen to take a proactive and hands on role within our school community and support us in teaching our children about the Christian beliefs and values. We also hope that he/she will build*

*good working relationships with our children, families and staff and be a person to whom they can turn if they wish.*

Part of the Churchyard where there are some very old graves is left to wildflowers, which helps promote the wide range of flora and fauna present. We are lucky to have two people in the village who are naturalists and did a detailed survey for us some years ago. They also help us by keeping a weather-eye on this area, and others in the village help by tidying up from time to time.

---

## KELSALE CUM CARLTON – ST PETER’S



The Church was originally a 14<sup>th</sup> Century chantry chapel, being a place of prayer and rest for pilgrims and monks travelling between Leiston Abbey and Framlingham Castle. The earlier chapel was extended and the existing Church restored in the 19<sup>th</sup> Century.

St Peter's is set among fields, approached either by public footpath or by car down a private track. It has no lighting or other utilities.

There are over 100 Friends of St Peter's who have been involved in holding Flower Festivals and concerts, and there is a link with the local primary school, Kelsale CEVC School. The churchyard is still open with graves and memorials of previous owners of Carlton Hall, including the Garrett family, who were big employers of the famous ironworks in Leiston.

St Peter's holds a special, cherished position in the Saxmundham Benefice and it has its own dedicated website:-

<https://www.carltonchurchsaintpeters.com/>



---

## AT THE CROSSROADS



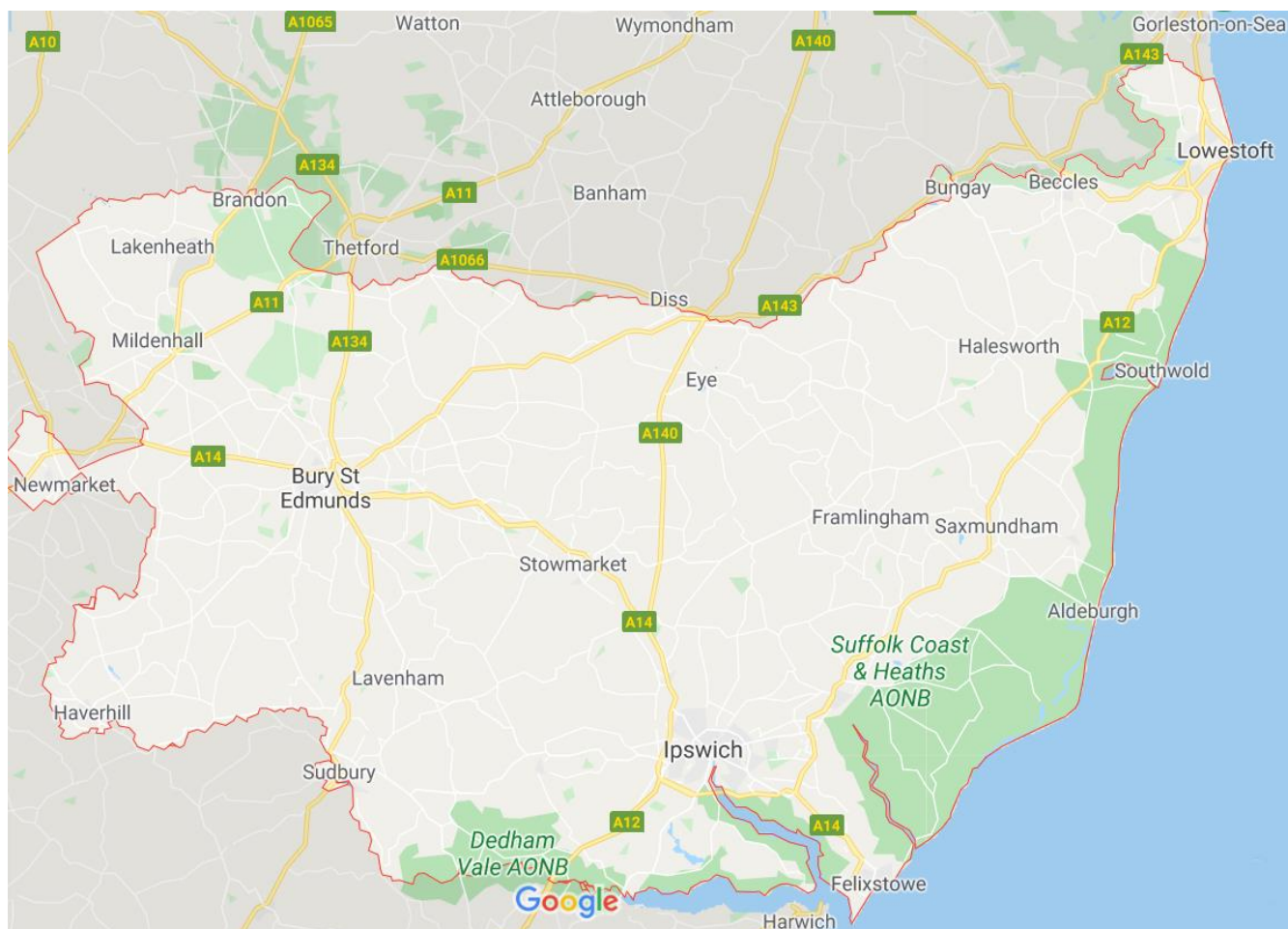
The “At the Crossroads” shop is our presence on the High Street in Saxmundham – a property given to St John's by a local landowner.

It's an attractive shop unit serving coffee, tea and snacks and it acts as a venue to catch up with friends or to be a space just to 'chill'.

We are also able to sell Christian Books and Bibles here as well as cards and other items.

The space doubles as a very useful place for young people to meet after school, and for other church groups to hold various meetings.

## THE LOCAL AREA



### SAXMUNDHAM AND KESALE CUM CARLTON

Suffolk Churches.co.uk tells us that Saxmundham is a fine little market town more or less halfway between Ipswich and Lowestoft. Saxmundham, or 'Sax' as locals call it, grew to prominence in the 18<sup>th</sup> and 19<sup>th</sup> centuries, and it still retains something of that period's character. But it is not a tourist town, unlike its rival Framlingham, or 'Fram', just across the A12.

The market town of Saxmundham lies just off the A12 and has a good range of traditional shops on its High Street. Saxmundham is a popular Suffolk town and is attractive to young families and those seeking to retire. It is a growing market town, and has a population of around 5000 and has had significant growth in the last 10 years and continues to grow. The town attracts people from neighbouring communities to shop and use the facilities. It has its own train station and buses, which connects the town to neighbouring communities. The population of adjoining village of Kelsale cum Carlton is approximately 1000.

- Good train links with Ipswich and London
- Market town bypassed by A12
- Bank, Post Office and a large number of independent shops

- Two large supermarkets (Tesco and Waitrose)
- Two primary schools and an 11-16 Free School and a choice of 11-18 secondary schools all with good or outstanding OFSTED ratings nearby.
- Museum, Library, Community Hub
- History, Horticulture and many other societies
- Fun Factory
- Local Campsites
- Doctors, Dentists and pharmacy
- Nursing homes
- Sports Club, Tennis, Running, Cricket and Bowls clubs, and an Adventure Playground at Carlton Park
- Large employers nearby, BT and Sizewell
- A warm welcoming community.

---

## A LIST OF SOME WEBSITES MIGHT BE HELPFUL...?

<http://www.saxstjohns.org.uk/>

<http://www.connectionschurch.org.uk/>

<https://www.visitsuffolk.com/>

<https://www.thesuffolkcoast.co.uk/suffolk-coast-towns-and-villages/saxmundham>

[www.kelsalecarltonpc.org.uk](http://www.kelsalecarltonpc.org.uk)

<https://www.dayoutwiththekids.co.uk/things-to-do/east/suffolk/saxmundham/sightseeing/tourist-attractions>

<https://www.light-wave.org/>

<http://www.saxmundham.org/news/latest.html>

<http://www.tidecollection.com/saxmundham-news>

<http://saxmundham.localstats.co.uk/census-demographics/england/east-of-england/suffolk-coastal/saxmundham>

---

## SUFFOLK HERITAGE COAST, FOREST AND HEATHLANDS

Saxmundham is in an attractive area of Suffolk, near the coast and other places of historic and natural beauty ....

Aldeburgh, Thorpeness, Minsmere and Dunwich within 20 mins drive; Southwold and Orford – 30 mins; Lowestoft and Felixstowe – 45 mins. The Music and Arts Centre at Snape Maltings, home of the Aldeburgh Festival, is under 15 minutes' drive, as is Framlingham with its fine English Heritage castle...



Aldeburgh Beach, Christmas 2019

...yet we are within a reasonable travelling distance of larger towns, like Ipswich, Bury St Edmunds and the City of Norwich.

“Latitude” and Folk East Festivals are also on the doorstep.

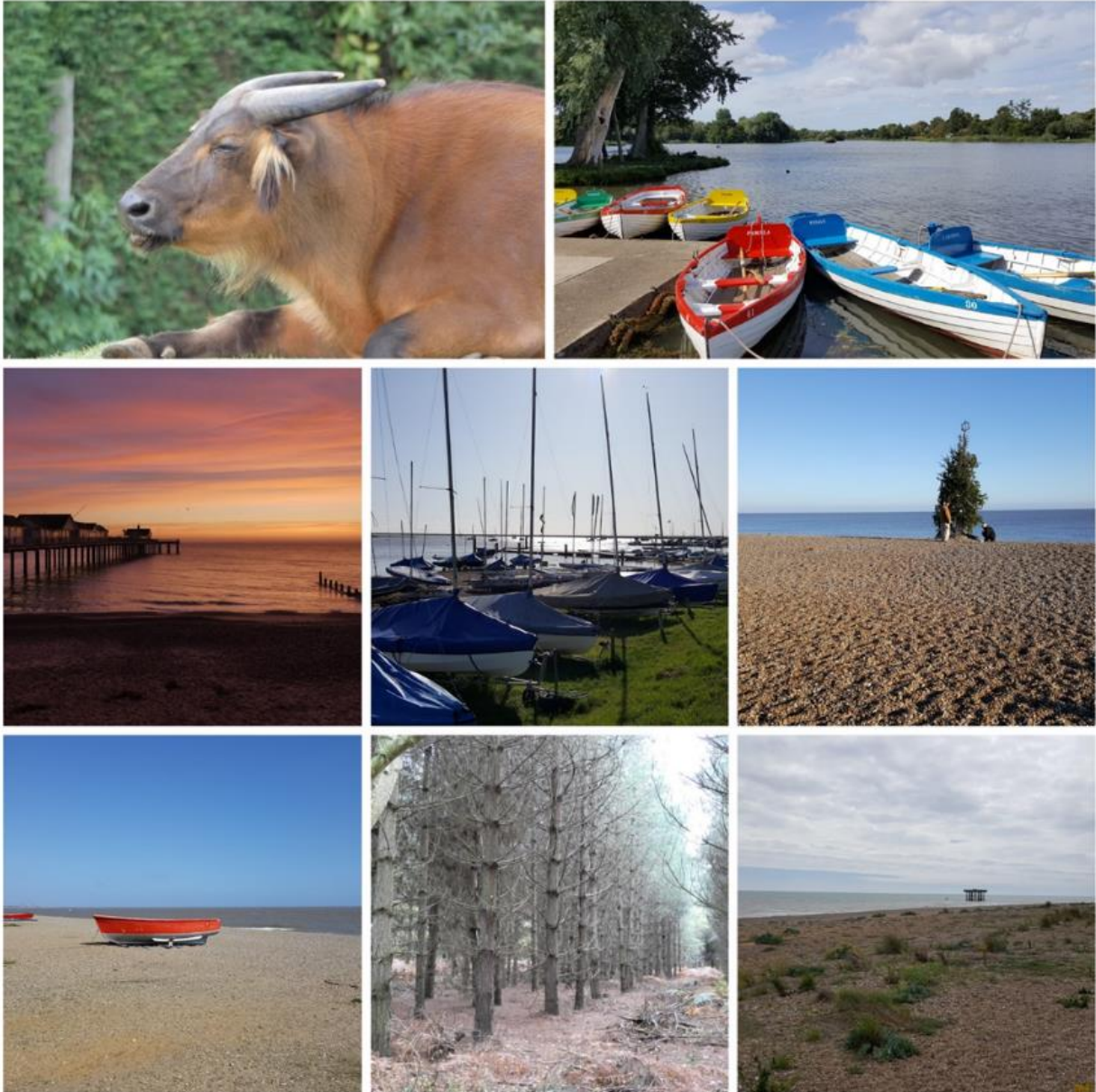


Framlingham Castle



---

## NEARBY ATTRACTIONS



Africa Alive - Thorpeness Mere  
Sunrise at Southwold – Orford Quay – Aldeburgh Christmas Tree  
Dunwich Beach - Dunwich Forest – Sizewell Beach

## THE DEANERY

Saxmundham Deanery is situated on the eastern edge of the Diocese of St Edmundsbury and Ipswich, much of our coastal area is designated as 'Areas of Outstanding Natural Beauty' and there are Sites of Special Scientific Interest. The coastline (part of which is owned by the National Trust), delightful countryside, RSPB and Suffolk Wildlife nature reserves, the attractive towns and villages, the association with the composer Benjamin Britten (along with the world-famous concert hall at Snape Maltings) and much more, all combine to draw many thousands of visitors and holiday makers. Many people appreciate the beauty and resources of this area as being a great place to live. In the last two centuries the area was at the forefront of much engineering innovation in agriculture and industry and today Sizewell is the site of one of the UK's major nuclear power stations and currently has a small substation for the offshore wind farms.

There is concern across the deanery about EDF's proposals for the building of the new nuclear power station (Sizewell C) and Scottish Power's proposals for the building of very large onshore substations at Friston for the enlarged offshore wind farms and we are monitoring the plans and considering how they may affect the work of our churches if the proposals are given government approval.

This deanery serves a resident population of twenty thousand and is composed of five Benefices with three small towns and many villages. The deanery has five stipendiary clergy and a number of self-supporting clergy, readers and lay elders. There are opportunities to help shape our deanery mission in response to identified priorities with regard to the Diocesan Vision 'Growing in God' which seeks to encourage flourishing congregations which make a difference.

The deanery is keen to foster collaborative ministry and encourage the ministry of the laity. It is essential that the person appointed to Saxmundham with Kelsale cum Carlton works creatively with the ministry team, the deanery clergy chapter (which meets monthly) and deanery synod (usually meets three times per year). We have a supportive Clergy Chapter and a Deanery Synod at which we attempt to include speakers from the Diocese who will challenge our members in what it means to 'be church'.

In order to best respond to the future needs of the area Bishop Martin has proposed that the living for Saxmundham with Kelsale cum Carlton is suspended. This is an exciting time to be joining our deanery as we seek to re-imagine ministry in this interesting area. We hope that whoever is appointed will have a sense of humour and the confidence to take risks to further the Kingdom of God.



THE CHURCH  
OF ENGLAND

## Diocese of St Edmundsbury and Ipswich

### WHERE ARE WE?

The Diocese covers the county of Suffolk, excluding the area around Lowestoft in the north-east, and one parish in Essex. It is a mainly rural Diocese with a large number of small villages, plus market towns including Woodbridge, Halesworth, Sudbury and Beccles and the cathedral town of Bury St Edmunds with its historic ruins of the old Abbey. Ipswich is the county town with a population of about 137,000. Suffolk's population is c 650,000. The county embraces historic places of interest such as Sutton Hoo, culture at Snape with the famous annual Aldeburgh music festival, is on the Heritage coast and is a haven for lovers of natural history and birdlife. The busy port of Felixstowe is at the end of the A14 which runs via Cambridge to the Midlands and the A12 which gives access to London and the Norfolk Broads.

### WHO ARE WE?

We are often known as 'the Church of England in Suffolk'. The diocesan bishop is the Right Reverend Martin Seeley, and the suffragan bishop is the Right Reverend Dr Mike Harrison. Both work from the Bishop's House in Ipswich. They work together closely to help us shape our vision and strategy, and amongst a plethora of other tasks offer regular teaching mornings to nurture the faith of people in our congregations – and a regular Vlog which can be found on Facebook. There are three archdeaconries and over 450 churches where visitors will find a wide range of worshipping styles, from the traditional to contemporary, as well as Fresh Expressions and growing numbers of 'Lightwave' groups for those who haven't connected with traditional church previously. The Cathedral of St Edmund and St James in Bury St Edmunds is the mother church of the Diocese and is proactive in offering support to clergy and parishes including welcoming parishes on pilgrimage. We also work closely with our 88 Church of England primary schools. All this is, of course, supported by a small and committed diocesan staff based in the diocesan office in Ipswich.

---

## WHAT IS OUR VISION?

Our diocesan vision is to be 'Growing in God', aiming to grow 'flourishing congregations making a difference'. This vision was accepted by Diocesan Synod in 2014 and since then we have been focusing on four key priorities:

- ❖ Growing in Depth: responding to the call of Christ in every part of our lives
- ❖ Growing in Number: drawing the contacts we have into the life of God's kingdom
- ❖ Growing in Influence: reaching beyond ourselves in our impact on the wider world
- ❖ Growing Younger; building churches whose age-range reflects our communities

Parishes are encouraged to use a simple Mission Action Planning tool to help us all to focus on these priorities and how they might be worked out in each different context. We are trusting God that this vision, underpinned by a commitment to Christian stewardship, will bear fruit as we look to the future.

As part of this vision, we have recently received Strategic Development Funding for two major projects: Inspiring Ipswich, overseen by the Archdeacon of Ipswich which aims to grow the church in Ipswich through church planting and reaching out to those who live in the town, and 'Growing God in the Countryside', overseen by the Archdeacon for Rural Mission, which focusses on developing Rural Resourcing Churches and nurturing and discipling new Christians through small Lightwave groups.

We have also been part of a pilot scheme exploring how we can use our church buildings more creatively both for those who worship regularly and for the benefit of our communities and many churches have benefitted from this.

We are broadening our vision through a growing partnership with the Diocese of Kagera in Tanzania, with fruitful visits and links being established.

---

## HOW CAN WE DO THIS?

We value our huge range of different ministries: we have over 100 stipendiary clergy, plus many SSM and PTO clergy as well as lay and ordained chaplains who can be found in such diverse places as schools, prisons, hospitals, hospices, the army, RAF and the police. Some clergy are ordained to serve in their local Benefice through our pioneering 'auxiliary ordination pathway' which enables people's vocations to ordained ministry to be discerned within the Diocese.

All clergy work alongside lay ministers – Readers, elders, and the growing number people exercising recently introduced licensed ministries: pioneer ministers, evangelists, youth ministers and children's and family workers. Our ministry deployment principles encourage teams or clusters of lay and ordained ministers to work together so that clergy feel less isolated and ministry resources the mission of the church more effectively. We are just beginning to develop the principle of 'local ministers' in our Benefices, releasing people's gifts to serve in their locality.

We are excited about these new developments which are playing an important part in our diocesan vision of Growing in God.

So, in summary: As our Growing in God vision states, we aspire to be people who know that 'God is with us, gathering us as Christ-centred communities, calling us to make Christian disciples, sending us in loving service, empowering us by the Holy Spirit'.

We hope you will come and join us on our journey!

To find out more, visit [www.cofesuffolk.org](http://www.cofesuffolk.org)



The diocese of St Edmundsbury and Ipswich strongly encourages all incumbents to promote the growth of small missional groups and fresh expressions of Church in their Benefices. "Lightwave" has been created with a diocese-wide Bishops Mission Order in order to support clergy and lay people to work together in mission-shaped communities, reaching out in innovative ways.

The Lightwave Community meets in small groups in homes, pubs, offices, schools and other places and complements other ways of being church. The name of the community comes from the idea of lightwaves being the way in which light spreads into dark places. Lightwave is committed to shining the light of Jesus in Suffolk through acts of kindness and practical service as well as worship and witness.

Each lightwave group aims to do one activity together to bless their local community and to share faith in their locality or network. Each group receives support and training in their outreach through a growing network of coaches. Each is mainly concerned to bless people who are exploring faith for the first time, while simultaneously cooperating closely with local parish churches and others. The Lightwave Community is being developed through a Project called "Growing in God in the Countryside" funded by the Strategic Development Unit of the Church Commissioners until 2025. While both urban and rural Christians are part of this community, there is a particular focus on helping 1500 new disciples come to faith in rural areas in the period of the funding. Many Lightwave groups are planting fresh expressions of Church. The understanding is that such fresh expressions of Church will be new or different ways of being established primarily for the benefit of people who are not yet members of any church.

The Lightwave Community is developing three Rural Resourcing Churches, in different parts of Rural Suffolk to create and support the development of the small missional groups in their area and to intentionally provide sufficient critical mass for particular ministries which are currently under-represented in rural churches, for example with young adults and those in lower income brackets. Every part of the Lightwave Community has a vision for the great wave of God's love, bringing light to our county.



making Jesus visible through loving action

Loverural (to be launched in early 2020) – is about “making Jesus visible through loving action” in the Suffolk Countryside. It is part of the diocese’s strong commitment to rural areas. Loverural has three strands:-

- a) Drawing attention to the enormous role of the rural Christianity in building social capital
- b) Acting as a convenor for projects and congregations in the countryside including those of different streams and denominations so that good rural practice can be shared and mutual support offered
- c) Enabling those engaged in Christian-based social action to gain confidence and wisdom in how to make exploration of the Christian faith accessible to those engaging with their initiatives.

## GLOSSARY

While a Glossary is not really needed, we've added one at the end to help you quickly check some basic facts or practices of our Benefice. There's nothing new here, but it could act as a memory-jogger.

At the Crossroads	Church coffee and bookshop and venue for other meetings - on the Saxmundham High Street.
Benefice	St John the Baptist and Connections Saxmundham St Mary and St Peter Kelsale, St Peter Carlton (United Parish) both within two miles of the town.
Benefice News	A weekly newsletter/notice-sheet, now distributed electronically, with a printed version available for those not 'online' or visiting the churches.
Connections	Outreach church plant offering informal, accessible worship based at the Primary School. A Fresh Expression of Church working in conjunction with Lightwave.
Foodbank	We help to run a branch of the East Suffolk Food Bank covering Aldeburgh, Leiston and Saxmundham.
Fresh Expression	A form of church within a parish which breaks out of traditional expectations.
Growing in God	Diocesan 'Growth Initiative' – a challenge to grow our churches in Number, grow in Influence, grow in Depth and grow Younger.
Holiday Club	An annual Easter holiday club where all members of the Benefice get involved.
IP17 Good Neighbour Scheme	A dynamic and well-organized local community initiative set up at the start of the pandemic to support vulnerable people across the community with practical help and relief food aid.
Lay Elders	Members of our congregations with formal authorization to lead and speak in church; some also have pastoral responsibilities.
Lightwave	A Christian community within the Diocese, meeting in small groups in homes, pubs, offices, schools and other places, working alongside more traditional ways of doing church.
Listening Ear	One to one counselling with a trained Lay Elder.
Messy Church	The Anglican initiative, activity-based session for children and families. Now held in Kelsale Primary School.
Music With a Message	Café style evening service using music to trigger questions, discussion and Bible study.
Open the Book	Members from our congregations form a team who present Bible story assemblies in the primary schools.
Sizewell Hall	Christian Conference Centre – six miles away. Strong links with our churches.
Solos	Shared lunch held in the St John's Church Hall, once a month after the Morning Service. For anyone who might otherwise be on their own.
STOW	Supporting Tanzanian Orphans and Widows. Many church members are involved with this locally run relief charity.
Suffolk Coastal Debt Centre- CAP	The Christians Against Poverty debt centre providing debt help to all comers across a thousand square kilometres of East Suffolk.
The Dykema Family OMF	Ros Dykema was a member of the St John's congregation who went from our church family to work with OMF. She and her husband are now based in Canada.
The Filling Station	A monthly Christian celebration meeting for the Suffolk coastal area held in nearby Stratford St Andrew Riverside Centre.
The Hub	An after-school outreach drop in club for Years 6 and 7 (age 10-12).
Town Pastors	Friday night street pastor scheme run in nearby Leiston with Leiston churches.
Wholeness and Healing team	Prayer team available to pray with individuals during communion and after services and by phone.